

SMOOTH ER

CENTRIOLES

LYSOSOME

RIBOSOMES

GOLGI BODY

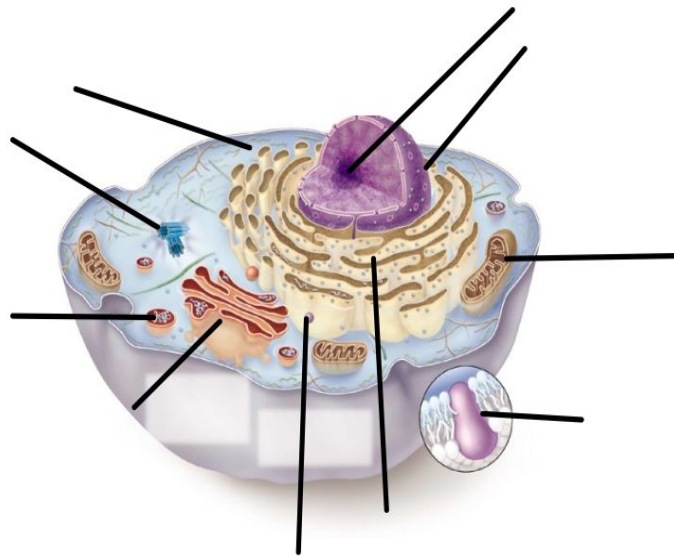
NUCLEOLUS

NUCLEUS

CELL MEMBRANE

MITOCHONDRIA

ROUGH ER



LABEL THE ANIMAL CELL

CHLOROPLAST

VACUOLE

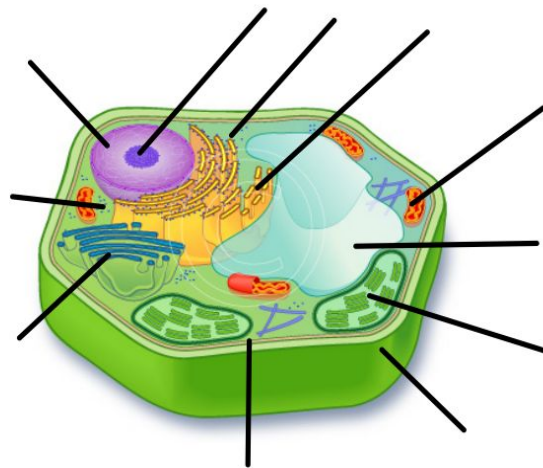
NUCLEUS

RIBOSOMES

ROUGH ER

GOLGI BODY

NUCLEOLUS



LABEL THE PLANT CELL

CELL MEMBRANE

SMOOTH ER

MITOCHONDRIA
CELL WALL