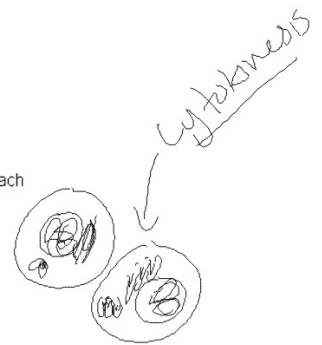
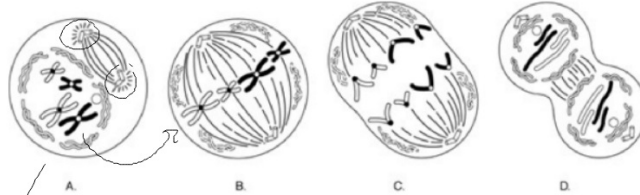


Label each phase, and write the important parts of each phase - (what is going on in each phase?)



Cell life

Prophase

- Chromosomes Condense
- Nuclear envelope (membrane) dissolves
- Centrioles form & Spindle fibers

metaphase

- Spindle fibers attach
- chromosomes line up.

Anaphase

- Chromosomes Split

Telophase

- Chromosomes turn back into chromatids
- Nuclear Membrane re-forms